

### A. GENERAL NOTES:

1. ALL DIMENSION ARE IN MM UNLESS OR OTHERWISE SPECIFIED.
2. ALL EXTERNAL PLASTER ARE IN 18 MM TH AND INTERNAL PLASTER ARE 12 MM TH.
3. ALL EXTERNAL WALLS ARE 200 MM TH AND INTERNAL WALLS ARE 100 MM TH OR OTHERWISE MENTIONED.
4. ALL ELECTRICAL AND PLUMBING WORKS ARE CONSIDERED AS PER I.S. CODE.

### B. STRUCTURAL NOTE:

1. ALL DIMENSION ARE IN MM UNLESS OR OTHERWISE SPECIFIED.
2. DIMENSION TO READ ONLY, NOT TO BE SCALED.
3. THIS DRAWING SHALL BE READ IN CONJUNCTION WITH RELEVANT ARCHITECTURAL DRGS.
4. FOR LOCATION OF THE BUILDING REFER ARCH. BLOCK LAYOUT PLAN.
5. F.G.L SHALL BE FIXED AT SITE AS PER SITE DECISION AND SHALL BE CONSIDERED AS (+) 0.00M.
6. BEARING CAPACITY OF SOIL - CONSIDERED AS 8.0 MT/M<sup>2</sup>.
7. GRADE OF CONCRETE = M-25, DESIGN MIX (U.O.M)
8. GRADE OF STEEL = Fe500
9. CEMENT = EQUIVALENT TO 53
10. CLEAR COVER TO REINF
  - a) FOUNDATION AND FOUNDATION BEAM=50MM
  - b) COLUMN= 40 MM
  - c) TIE BEAM=30 MM
  - d) STAIR=25 MM
  - e) SLAB TOP AND BOTTOM=20MM AND END=25MM
  - f) FLOOR BEAM=25 MM
  - g) ANTI TERMITE TREATMENT SHALL BE DONE AS PER RELEVANT I.S. CODES
  - h) 50 TH D.P.C (1:2) WITH WATER PROOFING ADMIXTURE SHALL BE PROVIDED AT PLINTH LEVEL OVER ALL BRICK WORK BELOW PLINTH LEVEL
  - i) CHAIR SHALL BE PROVIDED BETWEEN TWO LAYERS OF SLAB REINFORCEMENT WHEREVER REQUIRED
  - j) SPACE BAR OF SUITABLE DIA SHALL BE PROVIDED BETWEEN TWO LAYERS OF BEAM REINFORCEMENT WHEREVER REQUIRED.
  - k) ALL CONCRETE SHALL BE MIXED BY MIXER MC AND SHALL BE COMPACTED BY MECHANICAL VIBRATOR
  14. ANY DISCREPANCY OF THE CONSULTANT PRIOR TO EXECUTION.
  15. FOR ANY OTHER GUIDELINE NOT STATED IN THIS DRAWING RELEVANT I.S. CODED ARE NOT TO BE FOLLOWED

### C. AREA CALCULATION:

- 1 PLOT AREA - 2 NOS  
CV01-183.85 SQM  
CV02-182.36 SQM
- GROUND FLOOR AREA = 79.72 SQM
- FIRST FLOOR AREA = 46.05 SQM
- OPEN TERRACE AREA (100%) = 15.92 SQM
- JULIET BALCONY (100%) = 1.85 SQM
- TOTAL AREA = 150.07 SQM
- HARDSCAPE AREA = 20.31 SQM
- HEIGHT OF BUILDING = 6.0 METER.
- CAR PARKING PROVIDED = 1 NO.

### D. SIGNATURE OF OWNER:

Signature of Owner  
 Approved Signature  
 Signature of Engineer

### E. SIGNATURE OF ENGINEER:

Signature of Engineer  
 Approved Signature  
 Signature of Engineer

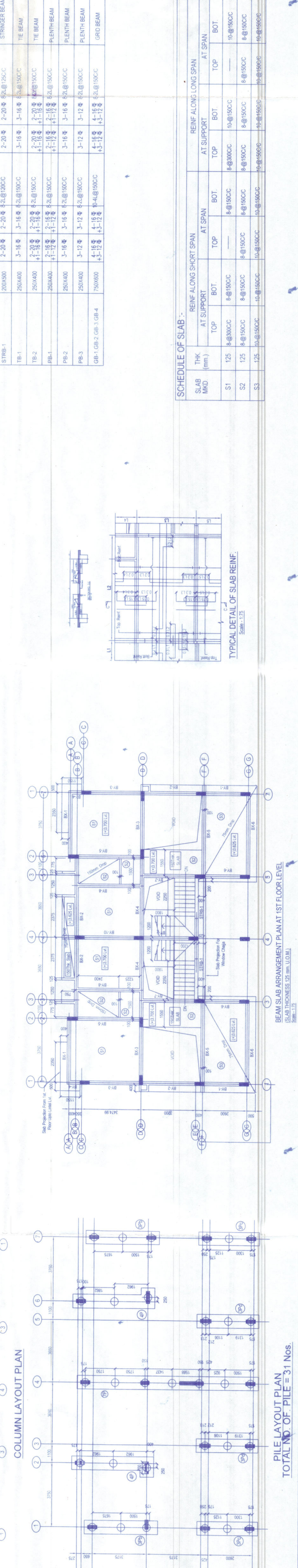
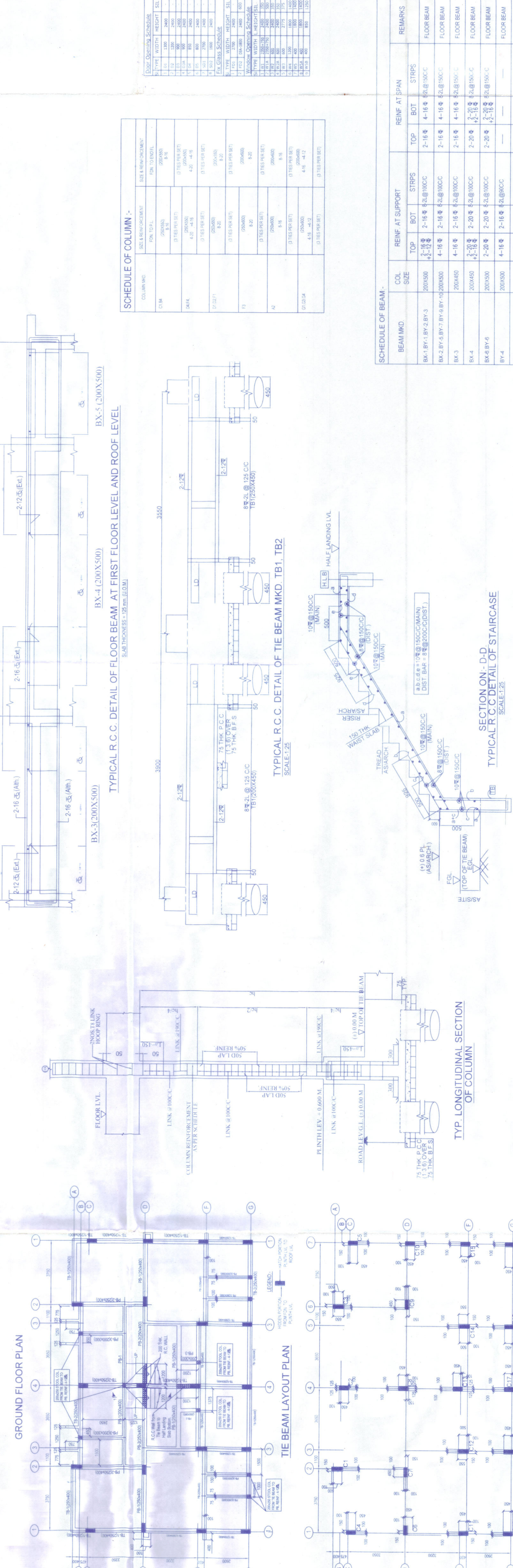
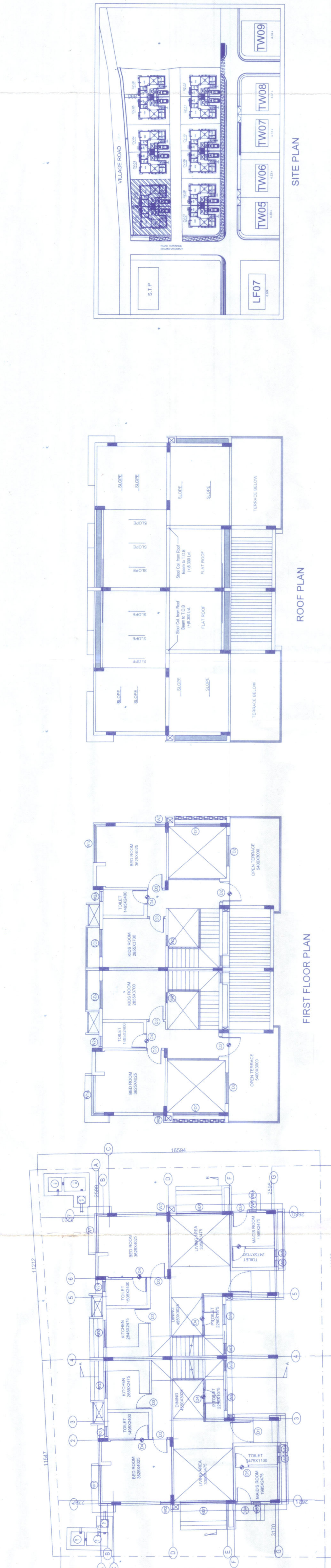
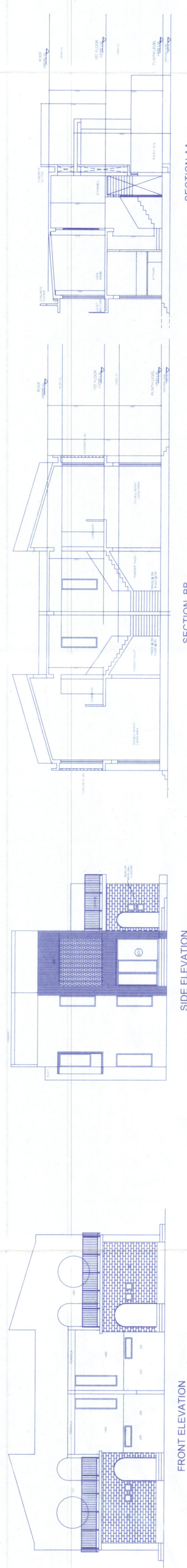
### F. PROJECT:

PROPOSED TYPICAL G+1 BUNGALOW FOR RESIDENTIAL COMPLEX AT PLOT NO CV-01&02, DAG NO-1960, MUJZA - RAMKRISHNAPUR, P.S - BISHNUPUR, DIST - SOUTH 24 P.C.S, WEST BENGAL.

### G. SANCTION DRAWING:

SITE PLAN, FLOOR'S PLAN, ROOF PLAN, ELEVATION, STRUCTURAL DETAILS OF SEPTIC TANK AND STRUCTURAL DETAILS OF PLOT NO CV-01&02.

Approved by  
 Signature of Authority  
 Date: 13/08/2024  
 Sheet No: DWG NO.01  
 SHEET TWO OF REV 01



#### SCHEDULE OF COLUMN

COL ID	COL SIZE	COL HEIGHT	CONCRETE GRADE	STEEL GRADE	REMARKS
C1	300x300	3.0	M25	Fe500	GROUND FLOOR
C2	300x300	3.0	M25	Fe500	FIRST FLOOR
C3	300x300	3.0	M25	Fe500	ROOF

#### SCHEDULE OF BEAM

BEAM ID	BEAM SIZE	BEAM LENGTH	CONCRETE GRADE	STEEL GRADE	REMARKS
B1	200x200	3.0	M25	Fe500	FLOOR BEAM
B2	200x200	3.0	M25	Fe500	FLOOR BEAM
B3	200x200	3.0	M25	Fe500	FLOOR BEAM
B4	200x200	3.0	M25	Fe500	FLOOR BEAM
B5	200x200	3.0	M25	Fe500	FLOOR BEAM
B6	200x200	3.0	M25	Fe500	FLOOR BEAM
B7	200x200	3.0	M25	Fe500	FLOOR BEAM
B8	200x200	3.0	M25	Fe500	FLOOR BEAM
B9	200x200	3.0	M25	Fe500	FLOOR BEAM
B10	200x200	3.0	M25	Fe500	FLOOR BEAM
B11	200x200	3.0	M25	Fe500	FLOOR BEAM
B12	200x200	3.0	M25	Fe500	FLOOR BEAM
B13	200x200	3.0	M25	Fe500	FLOOR BEAM
B14	200x200	3.0	M25	Fe500	FLOOR BEAM
B15	200x200	3.0	M25	Fe500	FLOOR BEAM
B16	200x200	3.0	M25	Fe500	FLOOR BEAM
B17	200x200	3.0	M25	Fe500	FLOOR BEAM
B18	200x200	3.0	M25	Fe500	FLOOR BEAM
B19	200x200	3.0	M25	Fe500	FLOOR BEAM
B20	200x200	3.0	M25	Fe500	FLOOR BEAM
B21	200x200	3.0	M25	Fe500	FLOOR BEAM
B22	200x200	3.0	M25	Fe500	FLOOR BEAM
B23	200x200	3.0	M25	Fe500	FLOOR BEAM
B24	200x200	3.0	M25	Fe500	FLOOR BEAM
B25	200x200	3.0	M25	Fe500	FLOOR BEAM
B26	200x200	3.0	M25	Fe500	FLOOR BEAM
B27	200x200	3.0	M25	Fe500	FLOOR BEAM
B28	200x200	3.0	M25	Fe500	FLOOR BEAM
B29	200x200	3.0	M25	Fe500	FLOOR BEAM
B30	200x200	3.0	M25	Fe500	FLOOR BEAM
B31	200x200	3.0	M25	Fe500	FLOOR BEAM
B32	200x200	3.0	M25	Fe500	FLOOR BEAM
B33	200x200	3.0	M25	Fe500	FLOOR BEAM
B34	200x200	3.0	M25	Fe500	FLOOR BEAM
B35	200x200	3.0	M25	Fe500	FLOOR BEAM
B36	200x200	3.0	M25	Fe500	FLOOR BEAM
B37	200x200	3.0	M25	Fe500	FLOOR BEAM
B38	200x200	3.0	M25	Fe500	FLOOR BEAM
B39	200x200	3.0	M25	Fe500	FLOOR BEAM
B40	200x200	3.0	M25	Fe500	FLOOR BEAM
B41	200x200	3.0	M25	Fe500	FLOOR BEAM
B42	200x200	3.0	M25	Fe500	FLOOR BEAM
B43	200x200	3.0	M25	Fe500	FLOOR BEAM
B44	200x200	3.0	M25	Fe500	FLOOR BEAM
B45	200x200	3.0	M25	Fe500	FLOOR BEAM
B46	200x200	3.0	M25	Fe500	FLOOR BEAM
B47	200x200	3.0	M25	Fe500	FLOOR BEAM
B48	200x200	3.0	M25	Fe500	FLOOR BEAM
B49	200x200	3.0	M25	Fe500	FLOOR BEAM
B50	200x200	3.0	M25	Fe500	FLOOR BEAM
B51	200x200	3.0	M25	Fe500	FLOOR BEAM
B52	200x200	3.0	M25	Fe500	FLOOR BEAM
B53	200x200	3.0	M25	Fe500	FLOOR BEAM
B54	200x200	3.0	M25	Fe500	FLOOR BEAM
B55	200x200	3.0	M25	Fe500	FLOOR BEAM
B56	200x200	3.0	M25	Fe500	FLOOR BEAM
B57	200x200	3.0	M25	Fe500	FLOOR BEAM
B58	200x200	3.0	M25	Fe500	FLOOR BEAM
B59	200x200	3.0	M25	Fe500	FLOOR BEAM
B60	200x200	3.0	M25	Fe500	FLOOR BEAM
B61	200x200	3.0	M25	Fe500	FLOOR BEAM
B62	200x200	3.0	M25	Fe500	FLOOR BEAM
B63	200x200	3.0	M25	Fe500	FLOOR BEAM
B64	200x200	3.0	M25	Fe500	FLOOR BEAM
B65	200x200	3.0	M25	Fe500	FLOOR BEAM
B66	200x200	3.0	M25	Fe500	FLOOR BEAM
B67	200x200	3.0	M25	Fe500	FLOOR BEAM
B68	200x200	3.0	M25	Fe500	FLOOR BEAM
B69	200x200	3.0	M25	Fe500	FLOOR BEAM
B70	200x200	3.0	M25	Fe500	FLOOR BEAM
B71	200x200	3.0	M25	Fe500	FLOOR BEAM
B72	200x200	3.0	M25	Fe500	FLOOR BEAM
B73	200x200	3.0	M25	Fe500	FLOOR BEAM
B74	200x200	3.0	M25	Fe500	FLOOR BEAM
B75	200x200	3.0	M25	Fe500	FLOOR BEAM
B76	200x200	3.0	M25	Fe500	FLOOR BEAM
B77	200x200	3.0	M25	Fe500	FLOOR BEAM
B78	200x200	3.0	M25	Fe500	FLOOR BEAM
B79	200x200	3.0	M25	Fe500	FLOOR BEAM
B80	200x200	3.0	M25	Fe500	FLOOR BEAM
B81	200x200	3.0	M25	Fe500	FLOOR BEAM
B82	200x200	3.0	M25	Fe500	FLOOR BEAM
B83	200x200	3.0	M25	Fe500	FLOOR BEAM
B84	200x200	3.0	M25	Fe500	FLOOR BEAM
B85	200x200	3.0	M25	Fe500	FLOOR BEAM
B86	200x200	3.0	M25	Fe500	FLOOR BEAM
B87	200x200	3.0	M25	Fe500	FLOOR BEAM
B88	200x200	3.0	M25	Fe500	FLOOR BEAM
B89	200x200	3.0	M25	Fe500	FLOOR BEAM
B90	200x200	3.0	M25	Fe500	FLOOR BEAM
B91	200x200	3.0	M25	Fe500	FLOOR BEAM
B92	200x200	3.0	M25	Fe500	FLOOR BEAM
B93	200x200	3.0	M25	Fe500	FLOOR BEAM
B94	200x200	3.0	M25	Fe500	FLOOR BEAM
B95	200x200	3.0	M25	Fe500	FLOOR BEAM
B96	200x200	3.0	M25	Fe500	FLOOR BEAM
B97	200x200	3.0	M25	Fe500	FLOOR BEAM
B98	200x200	3.0	M25	Fe500	FLOOR BEAM
B99	200x200	3.0	M25	Fe500	FLOOR BEAM
B100	200x200	3.0	M25	Fe500	FLOOR BEAM

#### SCHEDULE OF SUB

SUB ID	SUB SIZE	SUB LENGTH	CONCRETE GRADE	STEEL GRADE	REMARKS
S1	125x125	3.0	M25	Fe500	SHORT SPAN
S2	125x125	3.0	M25	Fe500	LONG SPAN
S3	125x125	3.0	M25	Fe500	LONG SPAN